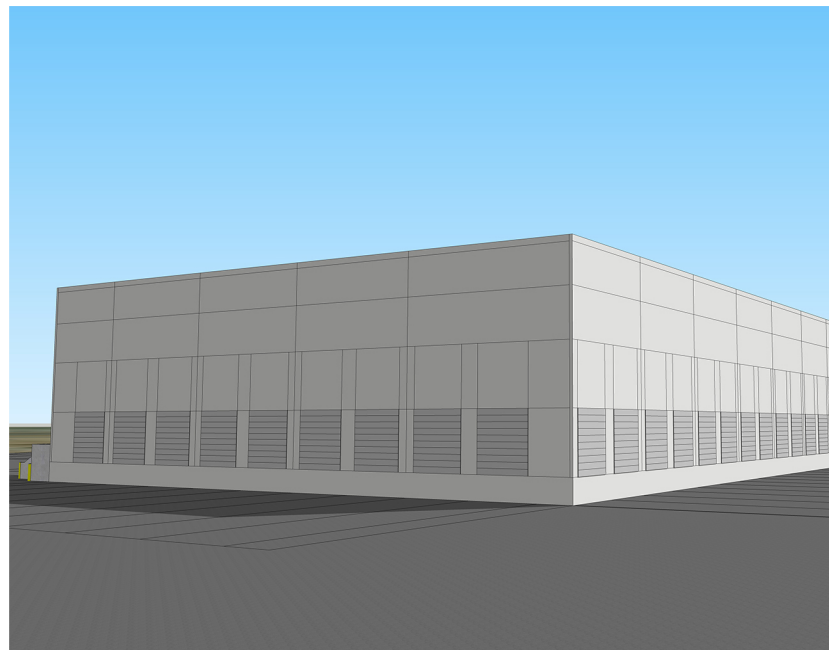


# PALM & KENDALL TRUCK TERMINAL FACILITY

*County of San Bernardino, California*



**CLIENT:** Dedeaux Partners

**DESCRIPTION:** Located in San Bernardino County, this 120-foot wide building sits on an approximately 21.34 acre site. 69,100 SF is designated to the terminal building, while 6,150 SF to a future office area. The site includes 100 dock doors and 538 truck trailer stalls.