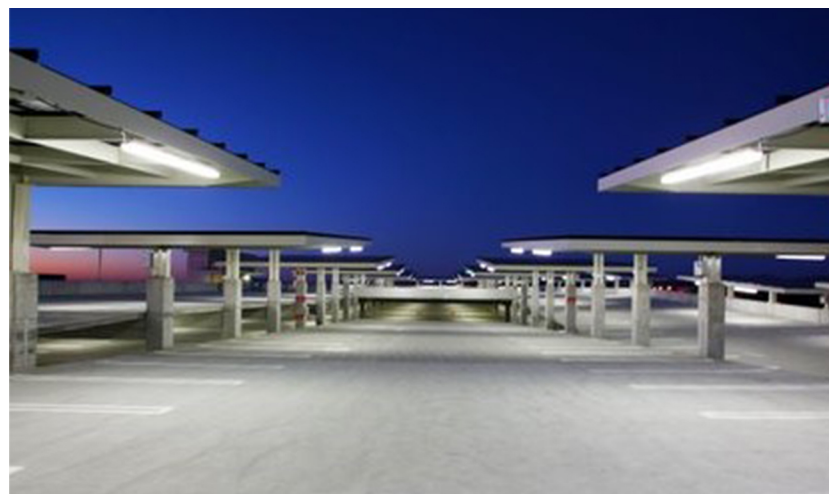


# COUNTY OPERATIONS CENTER PARKING STRUCTURE B

*San Diego, California*



**CLIENT:** City of San Diego

**DESCRIPTION:** This 1,820 car, seven-tier, cast-in-place long-span parking structure features roof-top solar panels, ductile frames, precast concrete cladding, and perforated metal screens.

*Winner of a County-sponsored design-build competition.  
Completed by Parking Design Solutions, a GAA joint venture.*